



Paulmann

IP 20



Info

www.paulmann.com

Paulmann Licht GmbH
Quezinger Feld 2
31832 Springe
Germany

www.paulmann.com

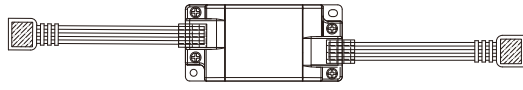
Art.-Nr.:

500.02



Only for MaxLED 500 and MaxLED 1000

PKE 08/17



1X



2X

MaxLED 500/MaxLED 1000 ✓

MaxLED Tunable White ✗

MaxLED RGBW ✗



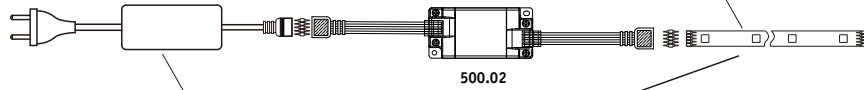
A

MaxLED 500/MaxLED 1000 ✓

MaxLED Tunable White ✗

MaxLED RGBW ✗

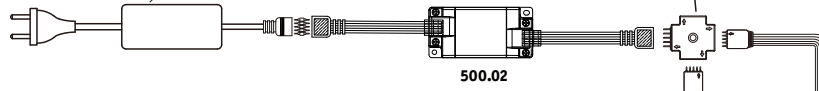
Art. No. 705.68/69/71/72/81/82/83/84/
706.59/60/61/62/63/64/75/76



500.02

Art. No. 705.77/78/79/80/85/86/88/89/706.04/05/65/66/67/68/69/70/71/72

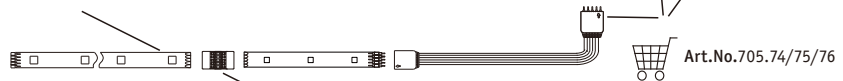
Art. No. 706.17



500.02

Art. No. 705.68/69/71/72/81/82/83/84/
706.59/60/61/62/63/64/75/76

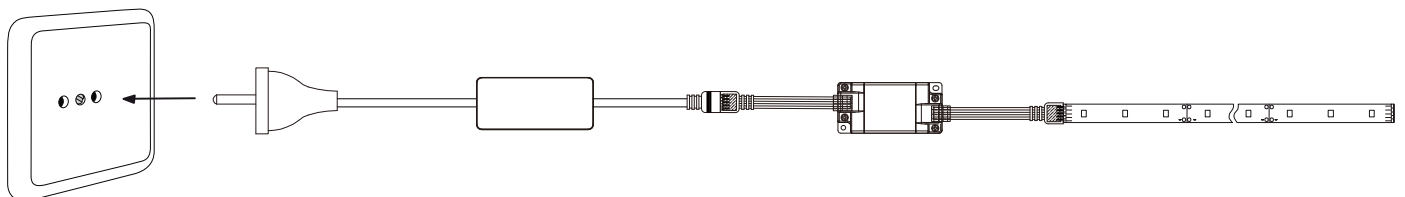
Art. No. 706.16

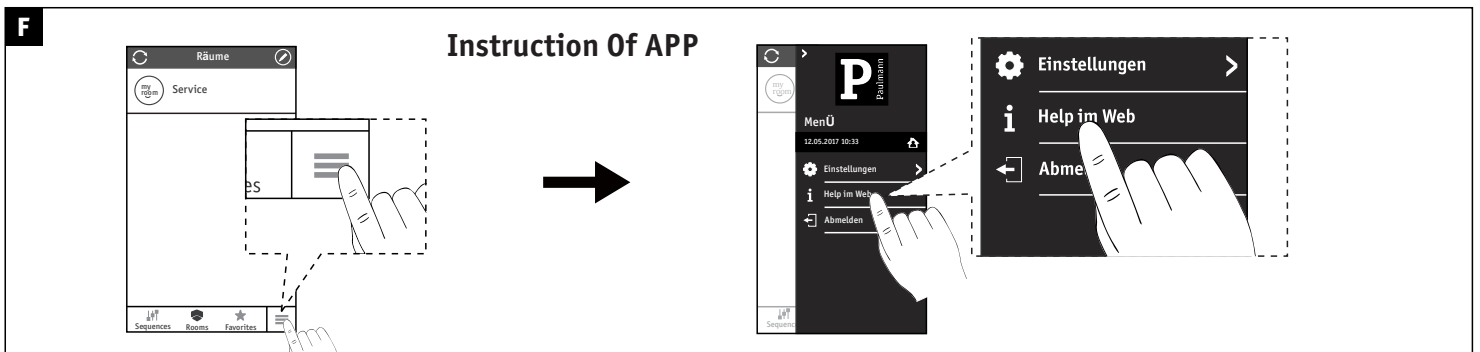
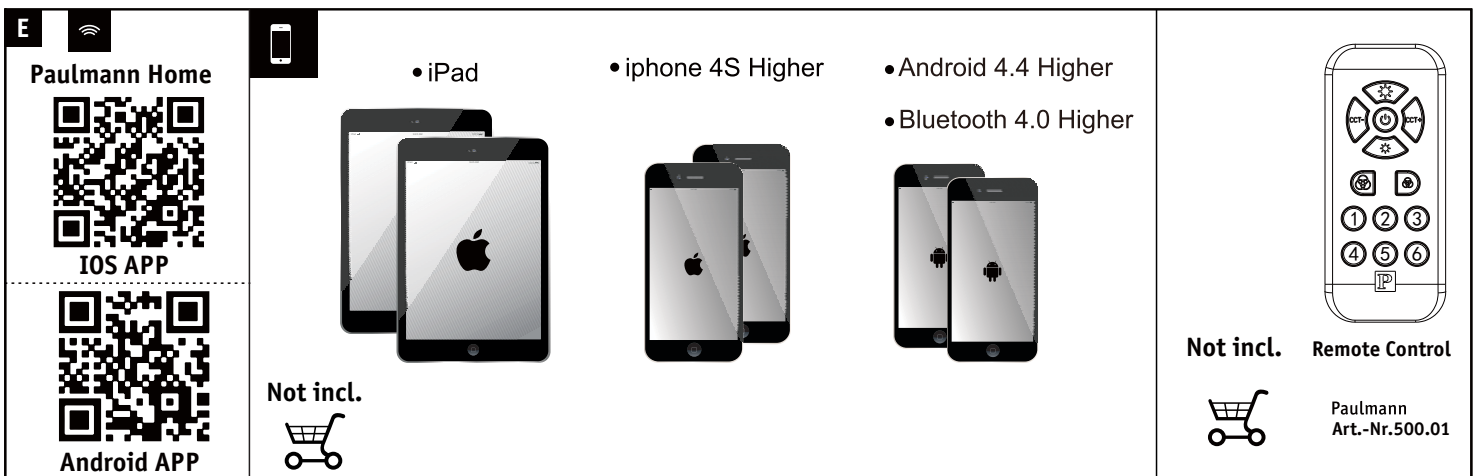
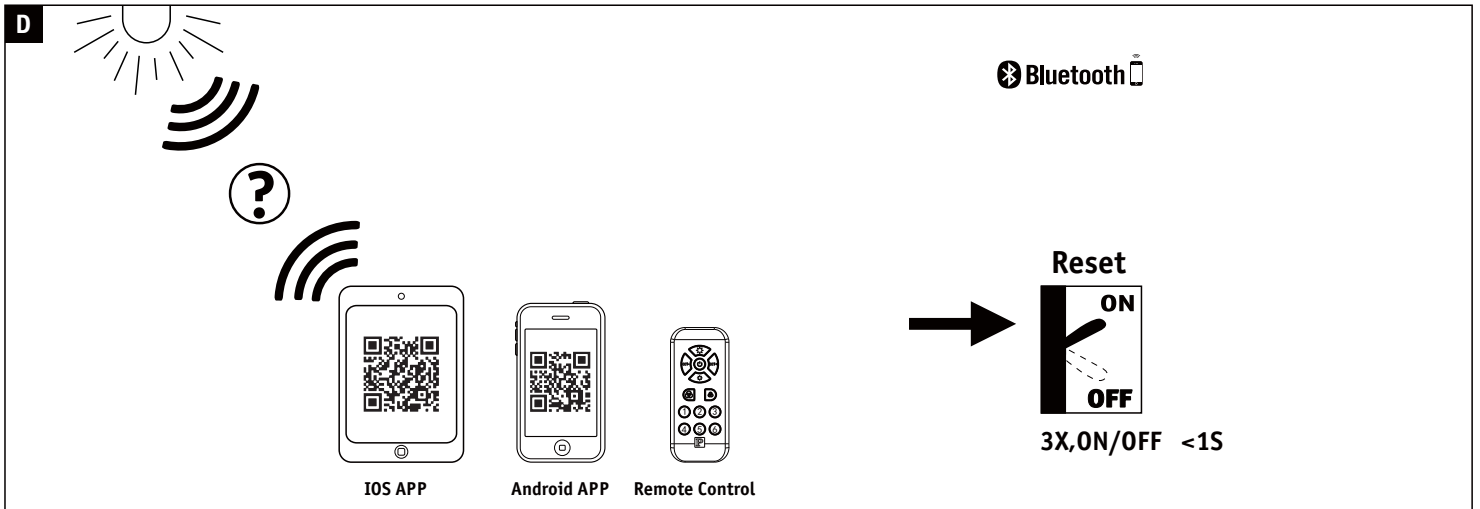
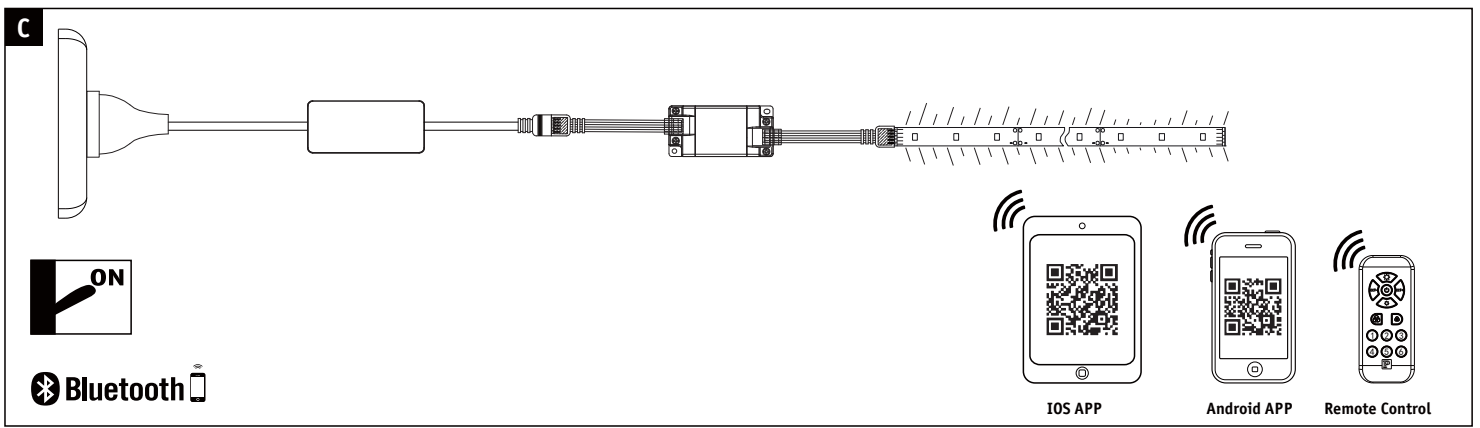


Art. No. 705.74/75/76

Art. No. 706.18

B





Hiermit erklärt Paulmann Licht, dass der Funkanlagentyp Art.-Nr: 500.02 Richtlinie 2014/53/EU entspricht. Der vollständige Text der EU-Konformitätserklärung ist unter der folgenden Internetadresse verfügbar: " www.paulmann.de

Zugelassen für den Betrieb in allen Ländern der EU / Approved for operating in all European countries

CE: Konform mit / in accordance with / conformément a 2014/30/EU, 2014/53/EU <http://www.paulmann.com/de/de/b2b-haendler-log-in.html>

Funk-Frequenz 2,4 GHz - 2,4835 GHz. Abgestrahlte Energie 10mW



doesn't apply for the geographical area within a radius of 20km from the centre on "Ny Alesund"